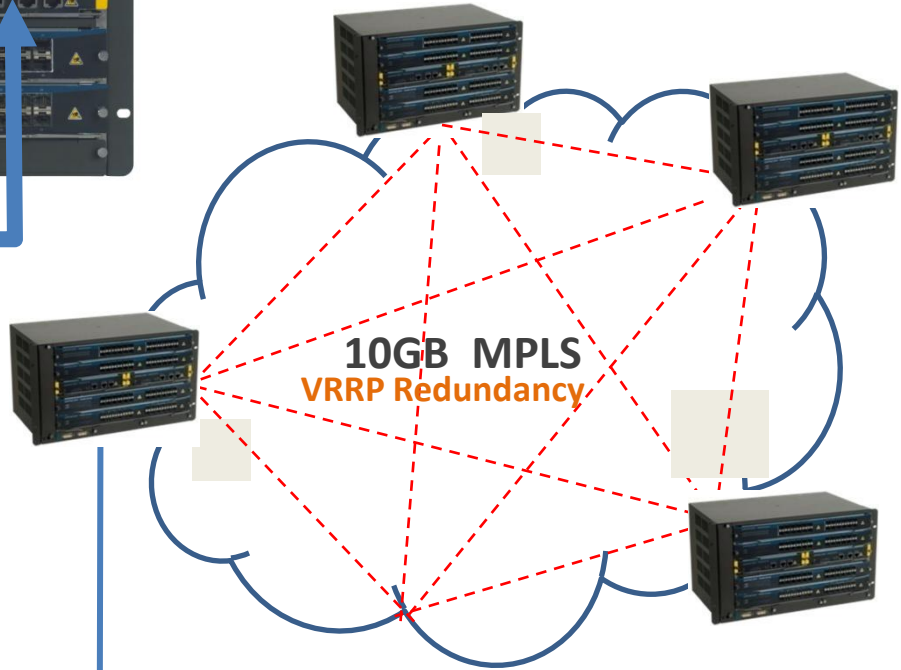


OptiCore 400 MPU



Product Features

DM4000MPU192

Medium Switching MPU.

Main Processing Unit: Supports switching for up to 8 access modules in the OptiCore 400 with a switching matrix capacity of 192Gbp/s and can be used in redundant setup.

Provides up to 24Gbp/s switching to each of the 8 access modules or 48Gbp/s to any 4 access modules with increases switching requirement.

DM4000 MPU384

High Capacity Switching MPU. Main Processing Unit: Supports switching for up to 8 access modules in the OptiCore 400 with a switching matrix capacity of 384Gbp/s and can be used in redundant setup.

Provides up to 48Gbp/s switching to each of the 8 access modules or 96Gbp/s to any 4 access modules with increases switching requirement.

-  **Single 10Gig BaseTX Optical SFP**
-  **Dual 10Gig BaseTX Optical SFP**
-  **1x 10G with 12 Gig Optical SFP**
-  **2x 10G with 12 Gig Optical SFP**
-  **12 Gig BaseTX Optical SFP**
-  **24 Gig BaseTX Optical SFP**
-  **24 Gig BaseT Electrical**
-  **48 Gig BaseT Electrical**